



# 产品规格书

## (Product Specification)

产 品 类 别: 贴片软光条  
(Commodity:) (SMT LIGHT RIBBON)

产 品 型 号: LD-2835 \* W30K190N1-12-60mA  
(Model No.): (LD-2835 \* W30K190N1-12-60mA)

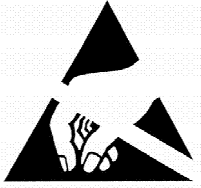
### 确认

(Confirmation)

客户确认 Customer confirmation	工程部 Engineering Department	品质部 Quality department

尊敬的客户认可后请回传一份以便于我们存档，谢谢！  
Dear Customer please return to us after confirm it ,thanks!

本产品资料仅供参考，所有产品以实物为准，如有变动，恕不另行通知。  
(This product specification is for reference only, all products are to prevail in kind.)



**ATTENTION**  
OBSERVE PRECAUTIONS  
FOR HANDLING  
ELECTROSTATIC  
DISCHARGE  
SENSITIVE  
DEVICES

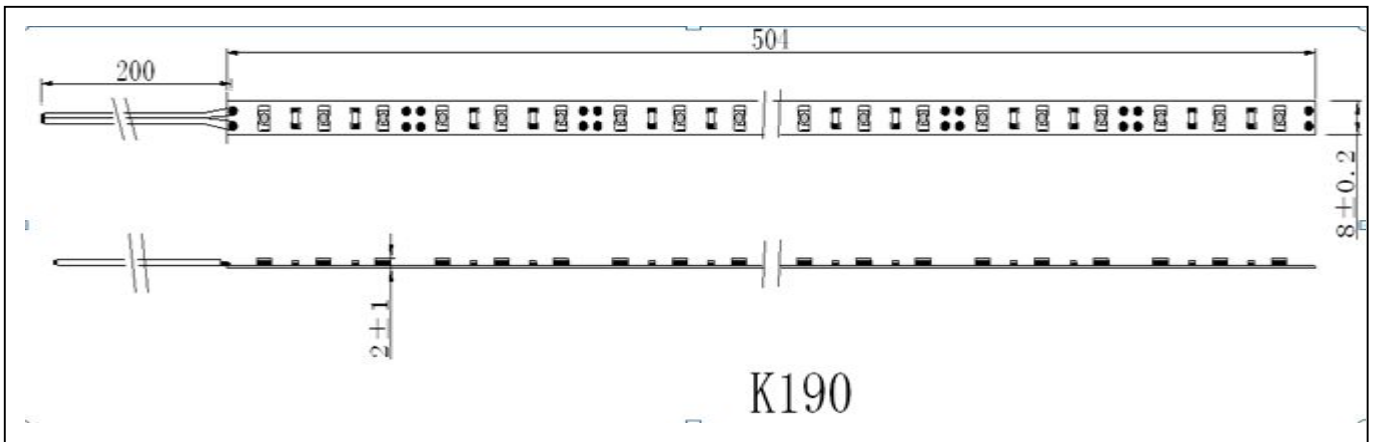
**LD-2835 \* W30K190N1-12-60mA**

**Features**

- 504MMX8MMX2MM SMD LIGHT RIBBON. 贴片软光条 30 个 LED 灯，长\*宽\*高 504MMX8MMX2MM
- PRINTED CIRCUIT BOARD THICKNESS: 0.2MM. 印制电路板厚度: 0.2MM
- WORKING VOLTAGE: 12V DC. 工作电压: 恒压 12V
- WORKING CURRENT:600MA. 工作电流: 600MA
- LED VIEW ANGLE(2 θ 1/2):120° . 发光角度: 120°
- PACKAGE: 5meters / REEL. 包装: 5 米/卷,
- Operating Temperature -15~+40 °C 工作温度 -15~+40 °C
- Storage Temperature -40~+60 °C 存储温度 -40~+60 °C



**Package Dimensions 产品参数**



**Notes:**

1. All dimension units are millimeters. 所有尺寸单位均为毫米
2. The production are RoHS compliant 产品符合 RoHS 标准
3. Longest makes 5 meters 最长做 5 米
4. Waterproof grade: IP20 防水等级: IP20
5. The light ribbon bend using, don't to do like the drawing on the right. the photo 2835 灯体非常脆弱，禁止像右图这样弯折。
6. Keep the surrounding temperature not too high, dry air and adequate ventilation is needed, the product can not be used in acid and alkali environment, otherwise it will cause the brightness degradation or damage 保持周围环境温度不要太高, 并且保证空气干燥、流通, 产品不能在酸/碱性环境中使用, 否则将会导致产品亮度下降或损坏
7. The strip can't expose to the high temperatures or directly under sunshine for long time; can't be installation and application under the condition of suffering the strong mechanical load and serious environmental pollution as well as the production have been damaged or be affected under damp condition 不能完全和长期暴露在高温或强烈的阳光直接照射下、不能遭受在强烈的机械负荷或强污染下、不能在产品损坏或者受潮的情况下安装和使用、不能修改线路或更换产品上部件



**Absolute Maximum Rating at TA=25°C 常温 25°C 环境下的光电特性**

Color 颜色	LED Amount LED 数量 (PCS)	Luminous flux 光通量 (lm)	CRI 显指	WORKING CURRENT 工作电流 (mA)	Size 尺寸 (mm) 长 X 宽 X 高	Dominant Wavelength 主 波 长 (nm)	Temperature TC 色温(光源)	Power 功率 /0.5m (w)
PW	30	560	80	600	504X8X2		5500-6500	7.2
WW	30	550	80	600	504X8X2		2800-3200	7.2
MW	30	560	80	600	504X8X2		3800-4250	7.2

Notes: Tolerance of measurement of luminous intensity  $\pm 10\%$ .

The above data for 0.5meter light ribbon for reference.

**Package means 包装方**



- 1PCS Reel/5 meters light strip, 1 outer carton /120PCS Reel.

**APPLICATIONS 应用**

- EDGE-LIGHTING OF TRANSPARENT OR DIFFUSED MATERIALS. 透明物或弥漫物的边缘照明
- PATH&CONTOUR MARKING. 道路标识
- ILLUMINATED SIGNS. 照明标志
- MOOD LIGHTING . 状态指示灯

灯条类型 The spec. of lamp	LD-2835WW30K190N1-12-60mA
净重 NET WEIGHT/PCS (KGS)	0.0104
每箱数量 QUANTITY/CARTON (Reel)	120
每箱净重 NET WEIGHT/CARTON (KGS)	13.5
每箱毛重 GROSS WEIGHT/CARTON (KGS)	14
外箱尺寸, 长*宽*高 SIZE OF CARTON, L*W*H(mm)	720*500*250