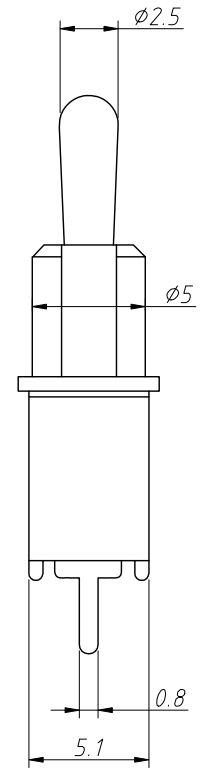
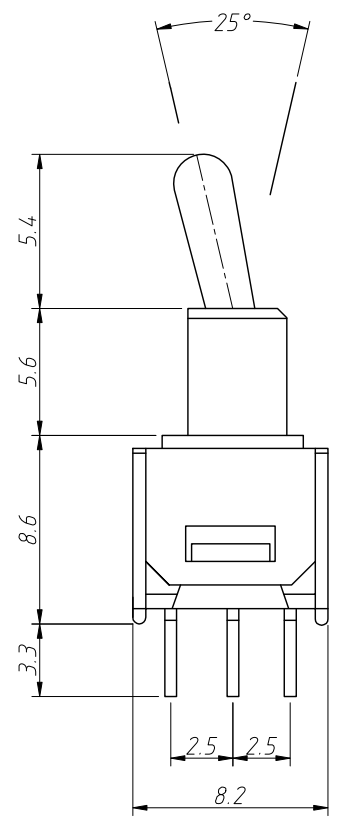
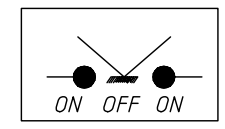


1
RoHS Compliance

6		7		8	
REV	SYM	Revision Record		Appr.	Date
V0		New Version Release		Song	2026-03-23

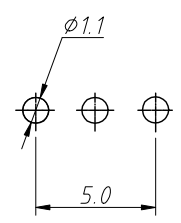


Electric:
 Rating: 1.5A 250V AC; 3A 125V AC
 Contact Resistance: 20mΩ Max
 Insulation Resistance: DC500V 1000MΩ Min
 Dielectric strength: 1500V AC, 1minute
 Electrical Life: 10,000 Cycles

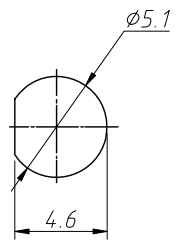


Circuit Diagram

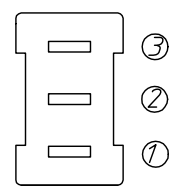
ITEM	SWITCH FUNCTION		
	POS . 1	POS . 2	POS . 3
POSITION			
CONNECTED	ON	OFF	ON
	2-3	OPEN	2-1



P.C. MOUNTING



PANEL MOUNTING



TERMINAL

ANGLE TOLERANCE	PROJECTION	Description:	Toggle Switch		
±3°					
GENERAL TOLERANCE	UNITS	mm	P/N:	SW-TSM-SFAR	
x.x ±0.30	SHEET SIZE	A4	CONN THERM		
x.xx ±0.20	Draw:	Song			2026-03-23
x.xxx ±0.10	Check:	Daniel			2026-03-23